



Product model: Runner 250

Software: X250 1.0

Date	Update history	Software download
2015-9-11	Runner 250 factory Low voltage protection reduces to 10V program 250 idle.1.0 program	X250_1_0.bin X250_低电压 10V.bin 250 怠速.bin



#### Configuration change description

Note:

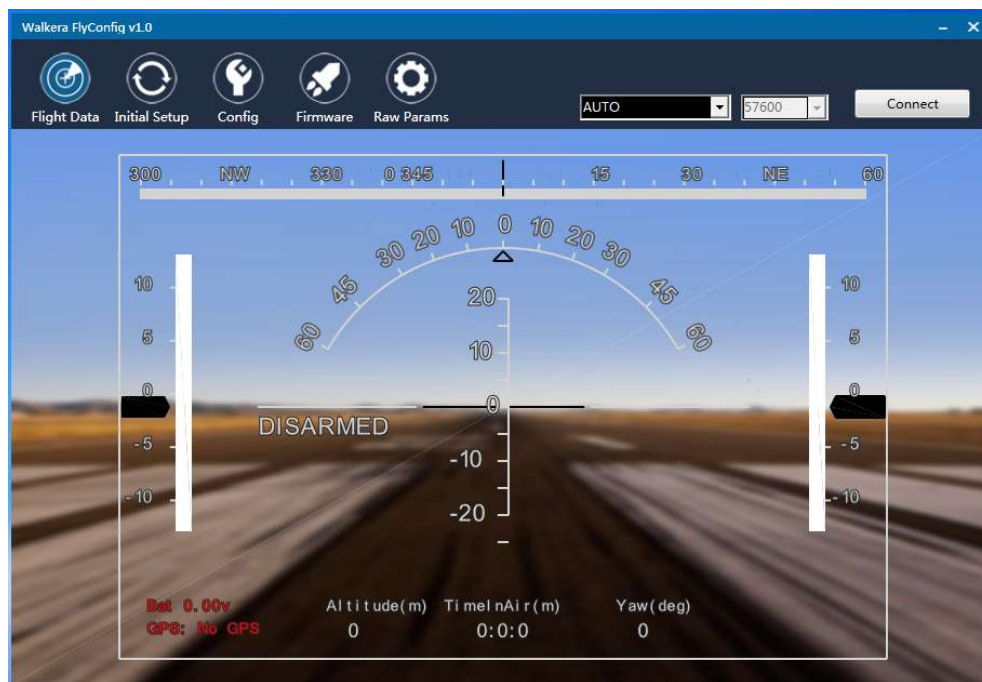
1. Configuration changes required to use FlyConfig Walkera tools
2. Upgrade X250\_ low voltage 10V.bin, battery voltage protection value in 10V, to solve the problem of high battery protection value
3. Upgrade 250 idle.Bin to unlock the motor to rotate at low speed, to solve the problem of the flight throttle to the minimum
4. The upgrade of all programs can not be used for Runner 250 R Version (GPS version)

步骤:

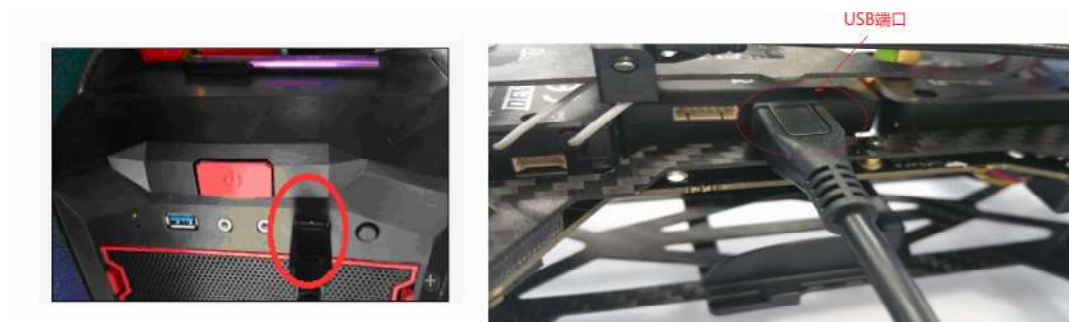
1. in the official website to download the FlyConfig Walkera software package; After decompression click Install Software 

2. Click on the desktop  Shortcut icon to open the software, Select the required language。 See below, Then click  Icon entry interface

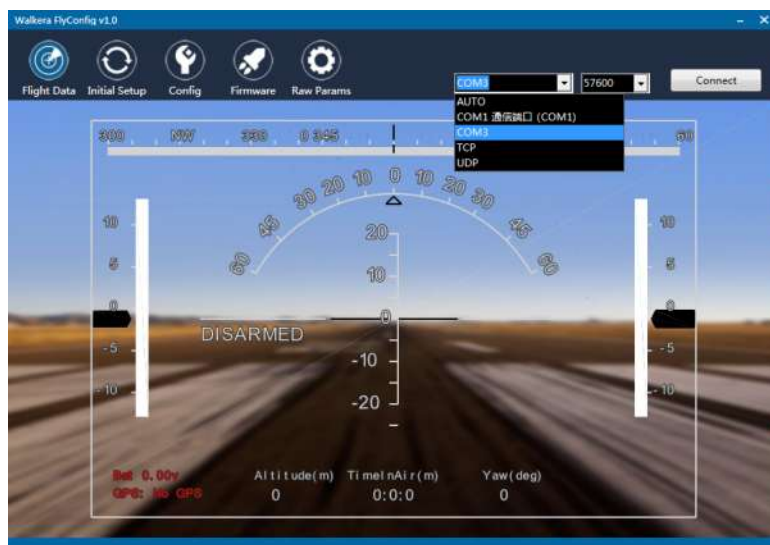




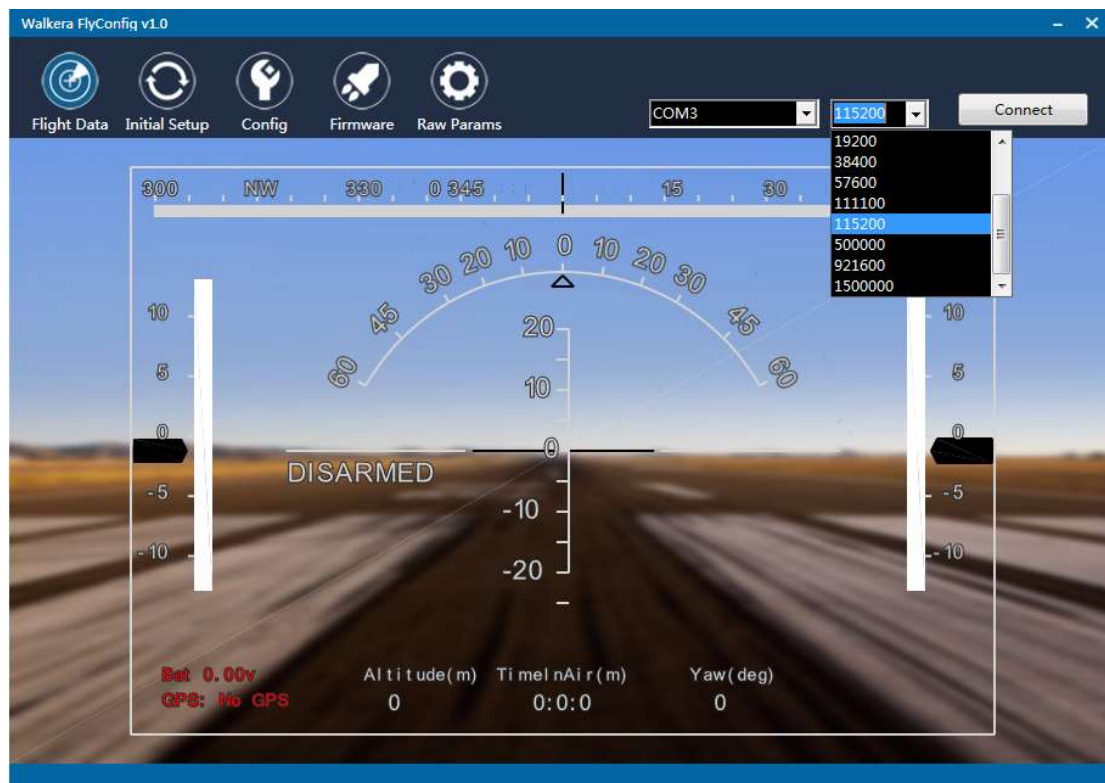
3 Insert one end of the USB line into the USB port of the PC, The other end is inserted into the USB port of Runner 250,



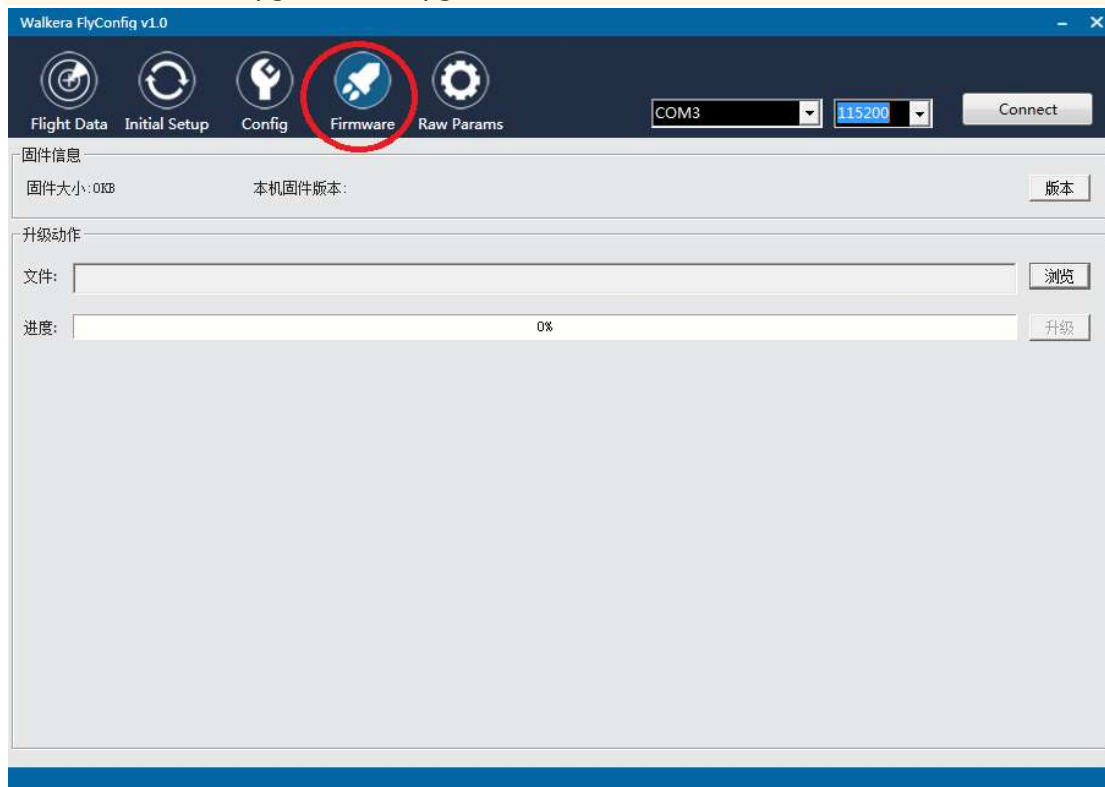
4. Click the AUTO item, select the COM port that is connected to the, ((see 3));



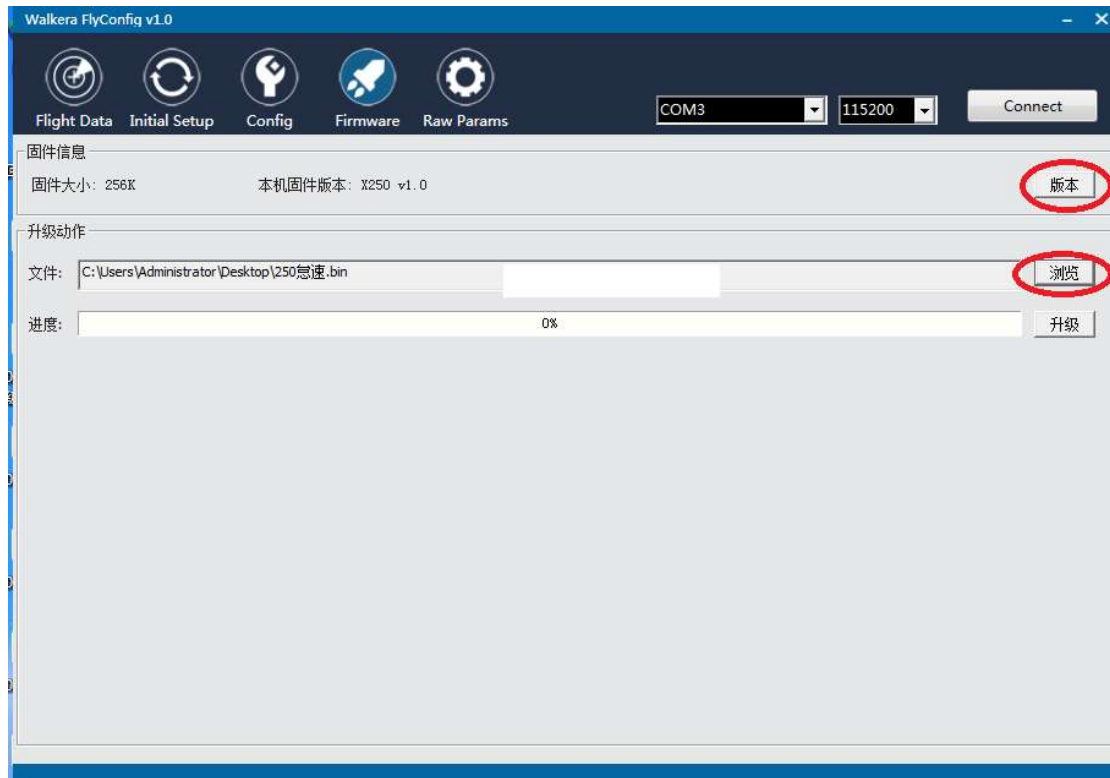
Click on the baud rate, (see 4), 115200



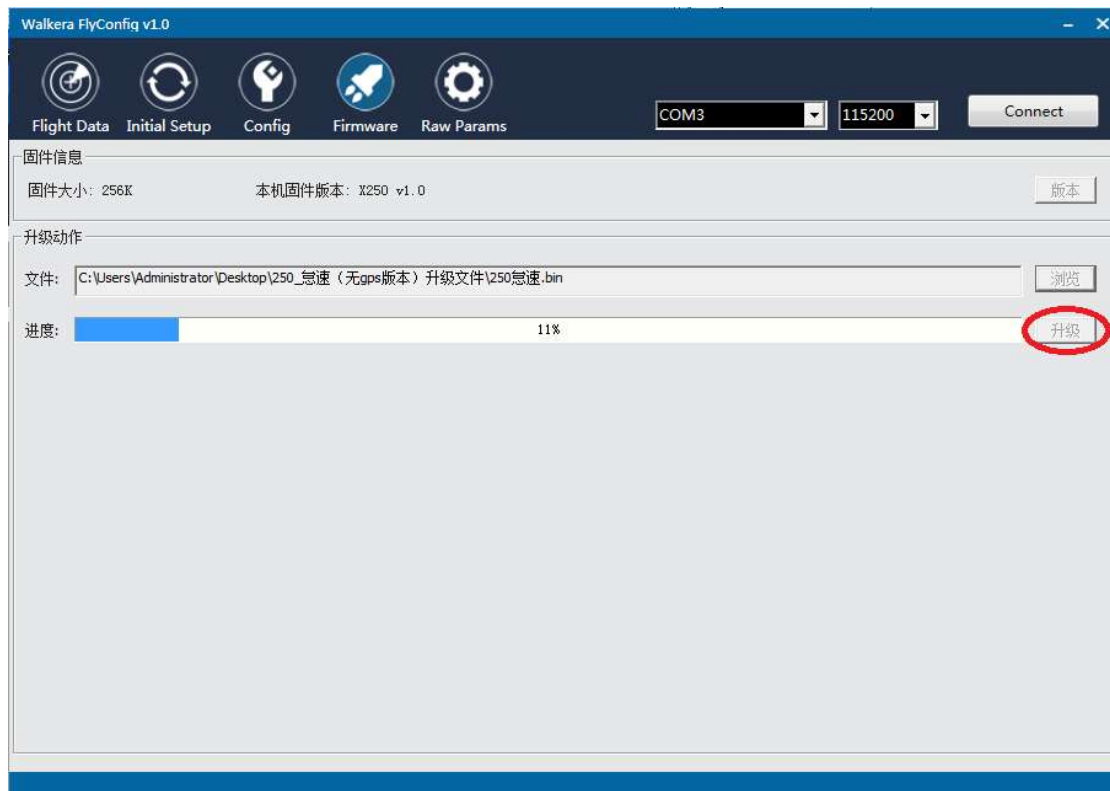
Click the firmware upgrade, the upgrade interface is as follows:



Click the browse file transferred to upgrade BIN



Click the upgrade, the progress bar, see the following figure, the progress of the 100% to upgrade



Such as the upgrade of the middle of the failure can be repeated steps